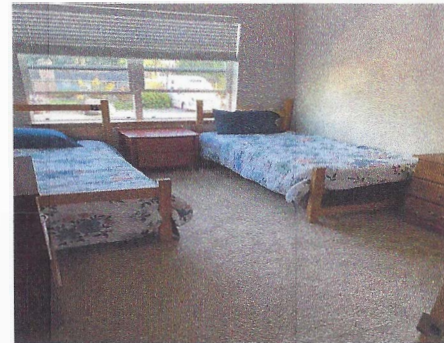


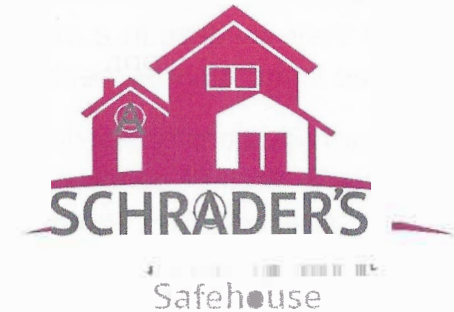
Mission

We are here to encourage self-worth, independence, self-sustainability, healthy relationships and the importance of basic life skills.



Schrader's Safehouse

Clean and Sober Housing



Dual Phased Program

Phase 1 - 12 Step Accountability
Phase 2 - Less Accountability



Schrader's Safehouse is a clean and sober living environment that incorporates a 12 step program facilitating women and children after drug and alcohol treatment, fleeing from domestic violence situations and individuals released from jails and/or prisons.

We are a family oriented, unity operated transitional house for women and their children in a multi-family shared living environment.

Safehouse provides onsite services to individuals in need of a safe, loving and supportive environment.

We provide a solid platform foundation that promotes healing from life's experiences focusing on the barriers of internal turmoil through the lifestyle of recovery.

Our home reconstructs the thought process and models a redirected approach that provides a pathway and encourages rebuilding of faith and restoration of self.

Our Housing has close:

- Public Transit
- Local Meetings (NA/AA)
- Local Shopping & Schools

Schrader's Safehouse incorporates supportive individual case management plans based on the individual's needs.

Our team of sisters produce lifelong friendships, healthy ties to the recovery community, onsite counseling and positive peer to peer support.



Housing Requirements

- Must be 18 yrs. or older.
- Complete interview process.
- Community outreach participation.
- Willing to work 12 step recovery program.

Services provided

- Shared housing- 6 bedroom 3 bath house
- Community referral
- Basic life skills
- Substance use assessment
- Coaching and Counseling services
- Case management support
- Employment opportunities

Contact Us

Schrader's Safehouse
Parkland, WA
Lisa Schrader (Owner)

Phone 253.317.7514
Cell 253.219.3616

[Schraders Safehouse](#) | [Facebook](#)